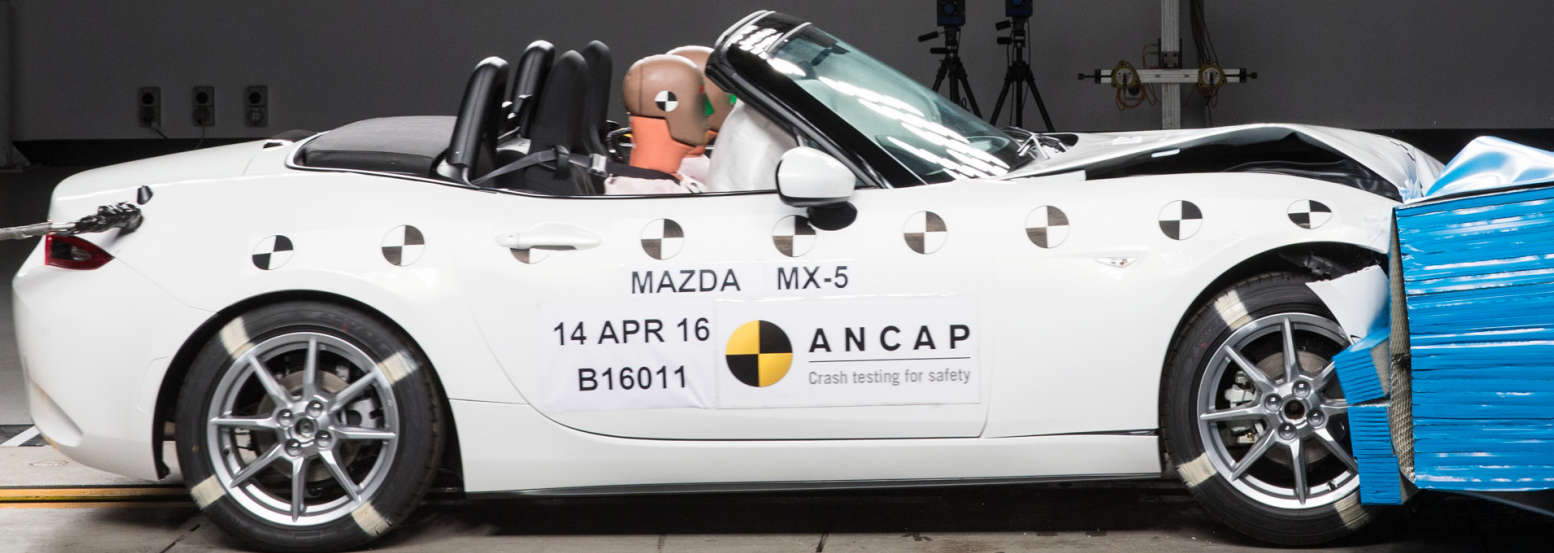


2016
ANCAP Safety Ratings.



ANCAP

Safety ★★★★★



MAZDA MX-5

14 APR 16

B16011



ANCAP

Crash testing for safety



What is ANCAP?

Australasia's leading independent vehicle safety advocate.

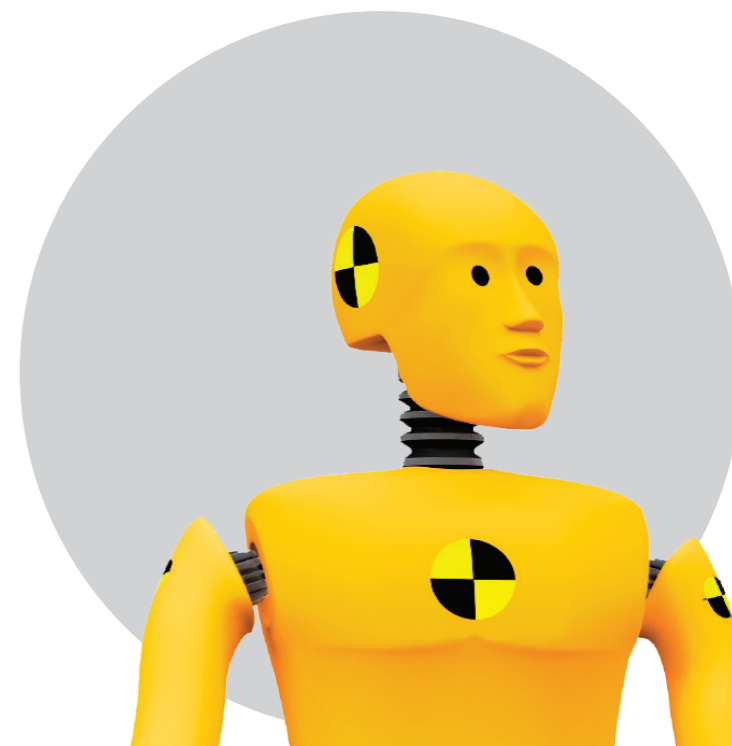
The Australasian New Car Assessment Program (ANCAP) provides consumers with transparent information on the level of occupant and pedestrian protection and collision avoidance capabilities provided by different vehicle models in the most common types of serious crashes through its star rating program.

ANCAP is supported by the Australian and New Zealand automobile clubs, Australian Federal, State and Territory governments, the New Zealand Government, the Victorian Transport Accident Commission, IAG and the FIA Foundation (UK).

45

In 2016, ANCAP published safety ratings for **45** new passenger, SUV and light commercial vehicles.

ANCAP safety ratings are determined based on a series of internationally recognised crash tests and technology assessments, with vehicles awarded an ANCAP safety rating of between 1 to 5 stars indicating the level of safety they provide in the event of a crash as well as their ability, through technology, to avoid a crash.



ANCAP is committed to raising the bar on vehicle safety.

Hyundai Elantra (February 2016 - onwards)
5 star ANCAP safety rating



HYUNDAI ELANTRA



ANCAP

Crash testing for safety

R16008 15 MAR 16

Small Car	Applies to	Airbags	Pedestrian Protection	Whiplash Protection	Autonomous Emergency Braking*	ANCAP SAFETY RATING	Rating Year^ (DATESTAMP)
Audi A4 October 2015 - onwards	4 cylinder variants	Frontal + Side + Head	Acceptable	Good	Standard	★★★★★	2015
Holden Astra November 2016 - onwards	RS & RS-V variants	Frontal + Side + Head	Good	Good	Optional	★★★★★	2015
Holden Spark March 2016 - onwards	All variants	Frontal + Side + Head	Acceptable	Good	Not available	★★★★★	2016
Kia Cerato June 2016 - onwards	All variants	Frontal + Side + Head	Acceptable	Good	Not available	★★★★★	2014
Kia Picanto 2016 - onwards	All Australian & NZ variants	Frontal + Side + Head	Marginal	Acceptable	Not available	★★★★★	2013
Mazda 3 August 2016 - onwards	All variants	Frontal + Side + Head	Acceptable	Good	Standard	★★★★★	2016
Subaru Impreza November 2016 - onwards	All variants	Frontal + Side + Head + Knee	Good	Good	Not available on base variant	★★★★★	2016
Subaru Levorg June 2016 - onwards	All variants	Frontal + Side + Head + Knee	Good	Good	Standard	★★★★★	2016
Toyota Corolla June 2016 - onwards	All hatch variants inc. Hybrid hatch	Frontal + Side + Head + Knee	Acceptable	Acceptable	Not available	★★★★★	2014
Toyota Prius November 2015 - onwards	All variants	Frontal + Side + Head + Knee	Good	Good	Standard	★★★★★	2016

Medium Car	Applies to	Airbags	Pedestrian Protection	Whiplash Protection	Autonomous Emergency Braking*	ANCAP SAFETY RATING	Rating Year^ (DATESTAMP)
Hyundai Elantra February 2016 - onwards	All variants inc. turbo	Frontal + Side + Head	Acceptable	Good	Not available	★★★★★	2016
Infiniti Q30 August 2016 - onwards	All variants	Frontal + Side + Head + Knee	Good	Marginal	Standard	★★★★★	2015
Jaguar XE August 2015 - onwards	All variants	Frontal + Side + Head	Good	Good	Standard	★★★★★	2015
Kia Optima November 2015 - onwards	All variants	Frontal + Side + Head	Acceptable	Marginal	Standard	★★★★★	2015
Lexus IS October 2016 - onwards	All variants	Frontal + Side + Head + Knee	Good	Good	Standard	★★★★★	2016
Skoda Octavia June 2016 - onwards	Front-wheel-drive variants	Frontal + Side + Head + Knee	Acceptable	Good	Standard	★★★★★	2016
Skoda Superb 2016 - onwards	Two-wheel-drive variants	Frontal + Side + Head + Knee	Acceptable	Good	Standard	★★★★★	2015

Large Car	Applies to	Airbags	Pedestrian Protection	Whiplash Protection	Autonomous Emergency Braking*	ANCAP SAFETY RATING	Rating Year^ (DATESTAMP)
Jaguar XF February 2016 - onwards	All variants	Frontal + Side + Head	Good	Good	Standard	★★★★★	2015
Mercedes-Benz E-Class July 2016 - onwards	All variants	Frontal + Side + Head + Knee	Good	Good	Standard	★★★★★	2016

Compact SUV	Applies to	Airbags	Pedestrian Protection	Whiplash Protection	Autonomous Emergency Braking*	ANCAP SAFETY RATING	Rating Year^ (DATESTAMP)
BMW X1 October 2015 - onwards	All variants	Frontal + Side + Head	Acceptable	Good	Standard	★★★★★	2015
Fiat 500X July 2016 - onwards	All variants	Frontal + Side + Head + Knee	Acceptable	Good	Not available on base variant	★★★★★	2016
Jeep Renegade May 2016 - onwards	Front-wheel-drive variants	Frontal + Side + Head + Knee	Acceptable	Good	Not available on base variant	★★★★★	2016
Mazda CX-5 September 2016 - onwards	All variants	Frontal + Side + Head	Acceptable	Good	Standard	★★★★★	2016
Mitsubishi ASX November 2016 - onwards	All variants	Frontal + Side + Head + Knee	Acceptable	Good	Not available	★★★★★	2014
Suzuki Vitara 2015 - onwards	All variants	Frontal + Side + Head + Knee	Good	Good	Not available	★★★★★	2015

Medium SUV	Applies to	Airbags	Pedestrian Protection	Whiplash Protection	Autonomous Emergency Braking*	ANCAP SAFETY RATING	Rating Year^ (DATESTAMP)
Hyundai Tucson November 2015 - onwards	All variants	Frontal + Side + Head	Marginal	Good	Not available on base variant	★★★★★	2015
Kia Sportage 2016 - onwards	All variants	Frontal + Side + Head	Acceptable	Good	Not available on base variant	★★★★★	2016
Mercedes-Benz GLC 2015 - onwards	All variants	Frontal + Side + Head + Knee	Good	Good	Standard	★★★★★	2015
Toyota RAV4 August 2016 - onwards	All variants	Frontal + Side + Head + Knee	Acceptable	Good	Optional	★★★★★	2016
Volkswagen Tiguan September 2016 - onwards	All variants	Frontal + Side + Head + Knee	Acceptable	Good	Standard	★★★★★	2016

Large SUV	Applies to	Airbags	Pedestrian Protection	Whiplash Protection	Autonomous Emergency Braking*	ANCAP SAFETY RATING	Rating Year^ (DATESTAMP)
Haval H9 2015 - onwards	All variants	Frontal + Side + Head	Acceptable	Good	Not available	★★★★★	2015
Holden Trailblazer July 2016 - onwards	All variants	Frontal + Side + Head + Knee	Good	Good	Not available	★★★★★	2016
Lexus RX October 2015 - onwards	All variants	Frontal + Side + Head + Knee	Good	Good	Standard	★★★★★	2015
Mazda CX-9 July 2016 - onwards	All variants	Frontal + Side + Head	Good	Good	Standard	★★★★★	2016

People Mover	Applies to	Airbags	Pedestrian Protection	Whiplash Protection	Autonomous Emergency Braking*	ANCAP SAFETY RATING	Rating Year^ (DATESTAMP)
Ford Tourneo Custom (NZ) March 2014 - onwards	All variants	Frontal + Side + Head	Marginal	Marginal	Not available	★★★★★	2012
Kia Carnival January 2016 - onwards	All variants	Frontal + Side + Head	Acceptable	Good	Not available	★★★★★	2016
Kia Rondo / Carens August 2016 - onwards	All variants	Frontal + Side + Head	Acceptable	Good	Not available	★★★★★	2013
Mercedes-Benz Valente July 2015 - onwards	All variants	Frontal + Side + Head	Acceptable	Good	Not available	★★★★★	2014
Mercedes-Benz V-Class July 2015 - onwards	All variants	Frontal + Side + Head	Acceptable	Good	Not available	★★★★★	2014

Sports Car	Applies to	Airbags	Pedestrian Protection	Whiplash Protection	Autonomous Emergency Braking*	ANCAP SAFETY RATING	Rating Year^ (DATESTAMP)
Mazda MX-5 September 2015 - onwards	All variants	Frontal + Side + Head	Good	Good	Not available	★★★★★	2016

Utility / Van	Applies to	Airbags	Pedestrian Protection	Whiplash Protection	Autonomous Emergency Braking*	ANCAP SAFETY RATING	Rating Year^ (DATESTAMP)
Ford Transit Custom March 2014 - onwards	All Australian variants from March 2014 All NZ variants from March 2016	Frontal + Side + Head	Marginal	Marginal	Not available	★★★★★	2012
Holden Colorado July 2016 - onwards	All variants	Frontal + Side + Head + Knee	Good	Good	Not available	★★★★★	2016
Mercedes-Benz Vito July 2015 - July 2016	All van & crewcab variants WITHOUT side head-protecting airbags	Frontal	Acceptable	Good	Not available	★★★★★	2014
Mercedes-Benz Vito July 2015 - onwards	All van & crewcab variants WITH side head-protecting airbags	Frontal + Side + Head	Acceptable	Good	Not available	★★★★★	2014
Toyota Landcruiser 70 Series September 2016 - onwards	Single cab-chassis variants	Frontal + Head + Knee	Marginal	Good	Not available	★★★★★	2016

* Details on the type of Autonomous Emergency Braking (AEB) system fitted to individual models can be found on the ANCAP website.

^ The Rating Year denotes the year requirements against which a vehicle has been assessed. The Rating Year is determined by ANCAP and may be based on the year in which a new vehicle model is first launched into the Australian and/or New Zealand markets; the year in which the vehicle was tested (if tested by Euro NCAP); or, for vehicles which hold an existing ANCAP safety rating, the year in which the rating was updated (or earlier applicable year).

NOTE: Rating information is subject to change. Please visit www.ancap.com.au to check current rating applicability.

What goes in to determining an ANCAP safety rating?

To achieve an ANCAP safety rating - of whichever star rating level - a vehicle must achieve minimum scores in each of the physical crash tests and meet minimum requirements for the inclusion of key safety features and safety assist technologies (SAT) which can help prevent or minimise, the impact of a crash.

The requirements for each star rating level increase each year - encouraging vehicle brands to continually improve the level of safety built into their cars for the benefit of all road users.

The 'Rating Year' published by ANCAP (also referred to as the datestamp) defines the criteria against which a vehicle has been assessed, and this is shown together with the star rating for each vehicle⁺.

So, when making your next car purchase, look for the rating year datestamp to ensure you're buying a car which meets the latest safety requirements.



Fiat 500X (July 2016 - onwards)
5 star ANCAP safety rating

⁺ For vehicles rated by ANCAP from July 2014.



ANCAP

Crash testing for safety

AUSTRALASIAN
NEW CAR ASSESSMENT
PROGRAM



ANCAP Australasia Limited
PO Box 4041, Manuka ACT 2603
AUSTRALIA

ABN 25 120 448 044

ancap.com.au

While ANCAP has made every effort to ensure that information contained in this brochure is free from material error, the information may not be accurate or up to date in all respects and we do not warrant the accuracy or completeness of any information contained therein. ANCAP does not warrant or represent that a 5 star rated vehicle will protect the driver and any passengers in all types of accidents.

